



LIGHTING CONTROL SYSTEM ON-SITE STARTUP REQUEST

This completed form is required prior to arriving on-site.

CAL+D will not schedule on-site visits, until all information below is verified as being complete

by a CAL+D Project MANAGER.

Please email this form to controls@cald-lighting.com or fax to 864-335-5066

PROJECT
NAME:

DATES REQUESTED
FOR STARTUP:

- What Date or Version # is shown on the supplied lighting control submittals?

YES NO

- Verify proper wiring and communication network connections in each cabinet and at each device.
 - 1) - Did you physically connect the network wire to each cabinet or device?
 - 2) - Did you connect the network in a daisy-chain arrangement?
- Confirm wiring conforms as per submittals.
 - 1) - Please use the approved CAL+D supplied drawings. Do not assume the standard factory instructions are appropriate for your project.
- Any loads that were landed differently than shown on Panel Schedules have been noted on submittals
- Test all network wire and connectors.
 - 1) - Use a CAT5 tester (Available at Home Depot / Lowes) to test all of the NETWORK wiring. A failed device, caused by mis-wiring, is not warranted.
- Energize loads with jumpers in place to verify no overloads exist and that all loads can be energized.
- Test all 0-10V dimmed circuits by shorting the #18 control wires (purple/gray) together and confirm fixtures dimmed to lowest level.
- Remove power from relays/dimmers/processor, remove jumpers, and re-energize system.

EC is responsible for labeling line voltage wires, low-voltage control wiring and CAT5/6 network runs.

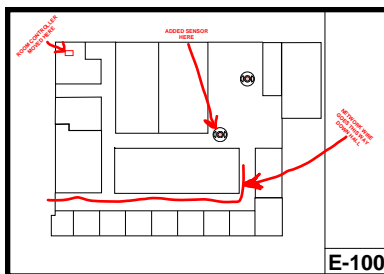
(EC Initials here)

EC is responsible for rewiring / swapping out devices as directed by the CFT (Certified Field Technician) during the onsite Startup

(EC Initials here)

EC understands that CFT's purpose onsite is to program the lighting control system and provide end-user training. CFT is not responsible for testing EC installed wiring.

(EC Initials here)



Send us your "AS-BUILT" markups!

We must know where network wire runs are and the physical location of devices on the floor plans

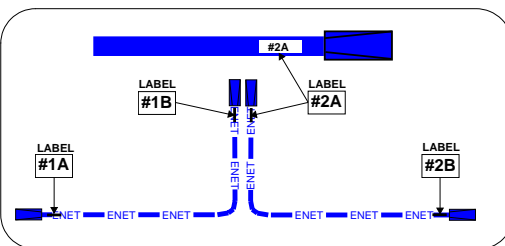
(EC Initials here)

Example 192.168.1.1

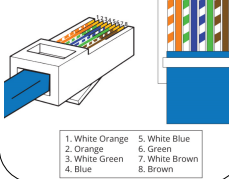
(OPTIONAL) IT Department has reserved a "Static IP Address" for the lighting controller. (required to access system from a remote computer)

TYPED LABELS ARE REQUIRED ON NETWORK CABLES

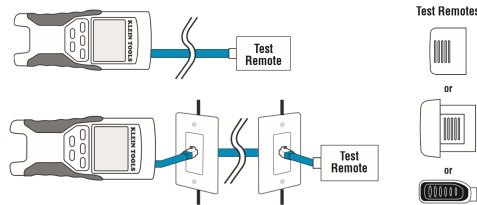
(EC Initials here)



RJ45 Pinout T-568B



TESTING CONTINUITY - TERMINATED OR INSTALLED RJ45/RJ12 CABLE



CANCELLATION POLICY:

If a Start-Up Request Form has been submitted and confirmed, and appropriate travel arrangements have been made (ie. flight, train, car rental, hotel, etc.) requester will be held responsible for all associated cancellation fees. CAL+D will invoice purchaser all associated cancellation fees.

Jobsite Street:

Electrical Contractor on Jobsite:

Jobsite City:

EC Cell #:

Jobsite State:

EC Company:

Jobsite Zip:

Today's Date:

EC Trailer/Connex located at:

EC Email Address:

Notes: